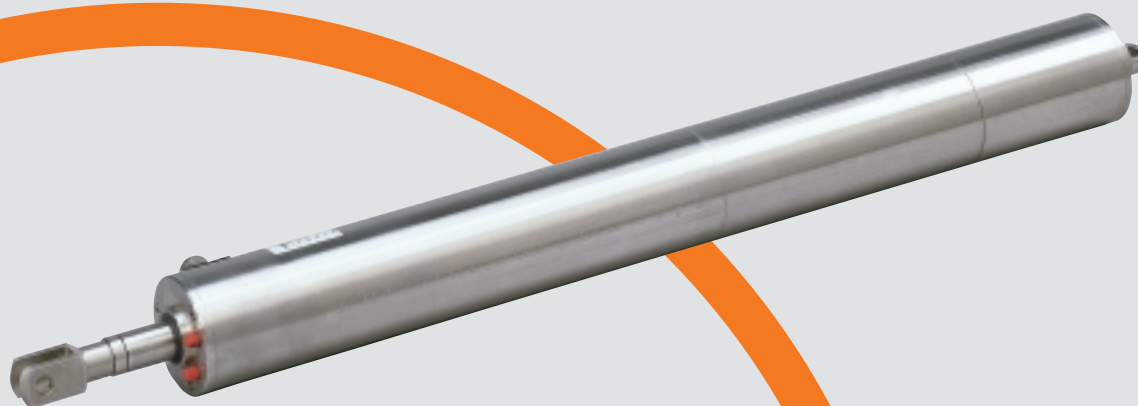


Linear actuator Econom 0 UL



*Our versatile model:
Econom 0 UL*



Econom 0 UL

Linear actuator Econom 0 UL




Versatile actuator technology for façade applications

elero is bringing the successful Econom 0 series to the North American market. Long utilized in Europe, the Econom 0 has become a standard for linear actuator technology for façade applications. The versatility, aesthetic form and weather resistant construction are the key characteristics that have made the Econom 0 a perfect fit for active façades. Whether it be the ventilation of double façades/skin constructions, precise positioning of exterior shading louvers, or sun tracking for façade mounted BIPV system – the Econom 0 is up for every challenge.

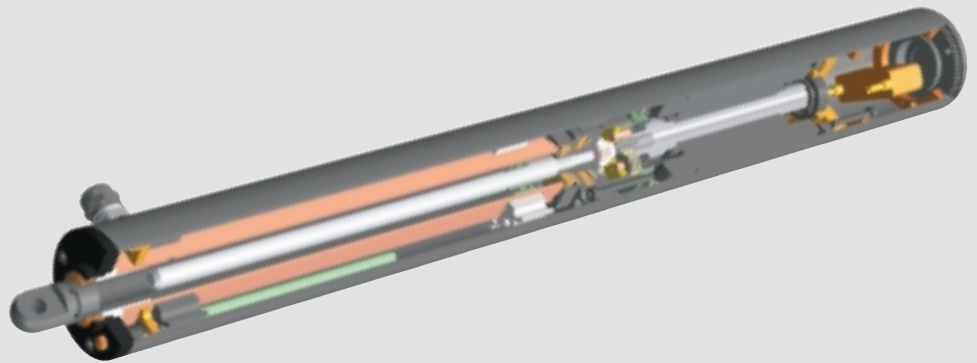
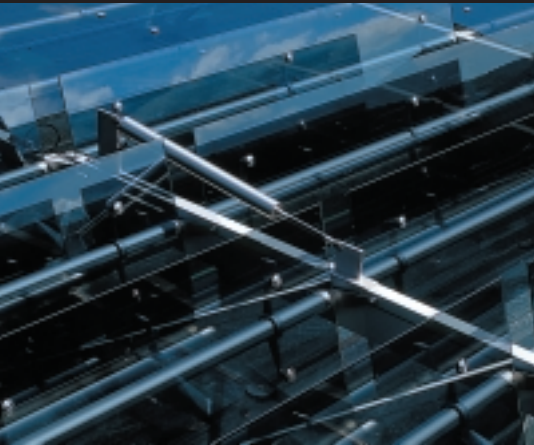
Econom 0 facts

- Robust weather-resistant (IP 65) stainless steel design
- UL certified
- Precise positioning for optimum solar tracking
- Capable of high static and dynamic loads
- Electromechanical push-rod actuators - low noise, maintenance-free, long service life
- Constant stroke speed under a variety of load conditions through the use of a robust asynchronous motor
- Integration into modern building management systems such as EIB/LON and other bus systems through SMI/DMI interface

Technical Specifications: Econom 0 UL

	Metric	Imperial
Load	Max. 3000 N	Max. 650 lbs.
Stroke length	50-400 mm	1.98-15.75 inch
Stroke speed	70 mm/s - 0.6 mm/s (6 mm/s for façade model)	2.76 in/s – 0.024 in/s (0.24 in/s for façade model)
Diameter	62 mm Ø	2.44 inch Ø
Length	Dependent on stroke length and options	
Voltage	120 V/ 60 Hz	
Ambient operating temperature	-4 °F till 176 °F (-20 °C till +80 °C)	
Service life	10,000 cycles (extend/retract)	
Housing material	Stainless steel (4301)	
Weather resistant rating	IP 65	
Options	Brake, encoder, potentiometer, multiple connection options (articulated lug, clevis end, etc.)	
Certification		

Econom 0 UL in action



Modern façade design is integrating more and more environmentally-friendly technology, turning the building's skin into an active membrane that improves building efficiency and comfort. The Nuertingen Regional Bank utilizes an innovative Building Integrated Photovoltaic Façade (BIPV) for their headquarters. As the bank required that the PV façade wall adjust to the sun's position in order to increase the efficiency of the photovoltaics, the architects turned to elero for the solution. The Econom 0 was the perfect fit for the BIPV façade, combining the actuators robust power to move the heavy PV louvers and precision to align them to the optimal seasonal solar position.



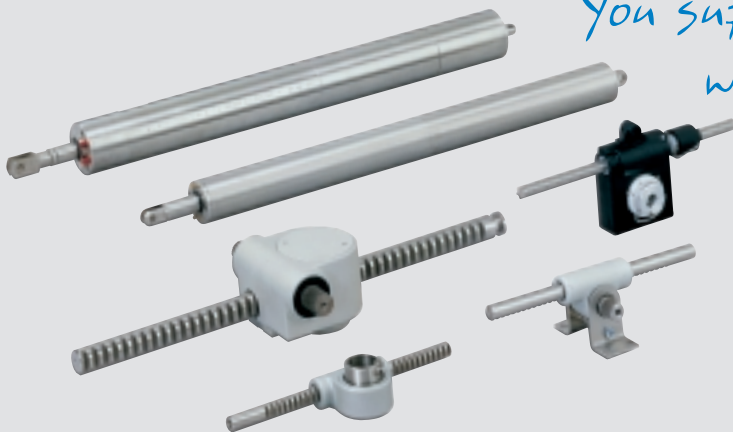
© Roland Halbe Fotografie

Bitterfeld Vocational Training Center is one of the largest low-energy buildings in Germany. The active façade, powered by Econom 0 linear actuators, not only provides shading but also actively influences building heating/cooling loads. The mix of façade materials in the project, heavy glazed glass louvers on the west/east facades and aluminium louvers on the south façade, was mastered without difficulty by the Econom 0. The linear actuators are integrated into the building control system and are balanced with the other building environmental systems, HVAC and lighting, to ensure a comfortable interior climate for a positive learning environment.

elero – your competent partner for façade drive solutions



*You supply the aesthetics –
we supply the technology*



Modern architecture demands unique solutions in terms of drive solutions. Actuator technology should move architecture, not change its design.

What counts is the freedom to be creative- that's what makes our drive solutions so exciting.

Let's talk about it.

elero GmbH

Linearantriebstechnik

Nassaeckerstrasse 11

D-07381 Poessneck

Phone +49 (0) 3647 / 46 07-0

Fax Reception +49 (0) 3647 / 46 07-40

Fax Purchasing department -41

Fax Sales department -42

Head office:

Linsenhofer Str. 59-63

D-72660 Beuren

Phone +49 (0) 70 25 / 13-02

Fax Reception +49 (0) 70 25 / 13-212

info@elero-linear.de

www.elero-linear.com