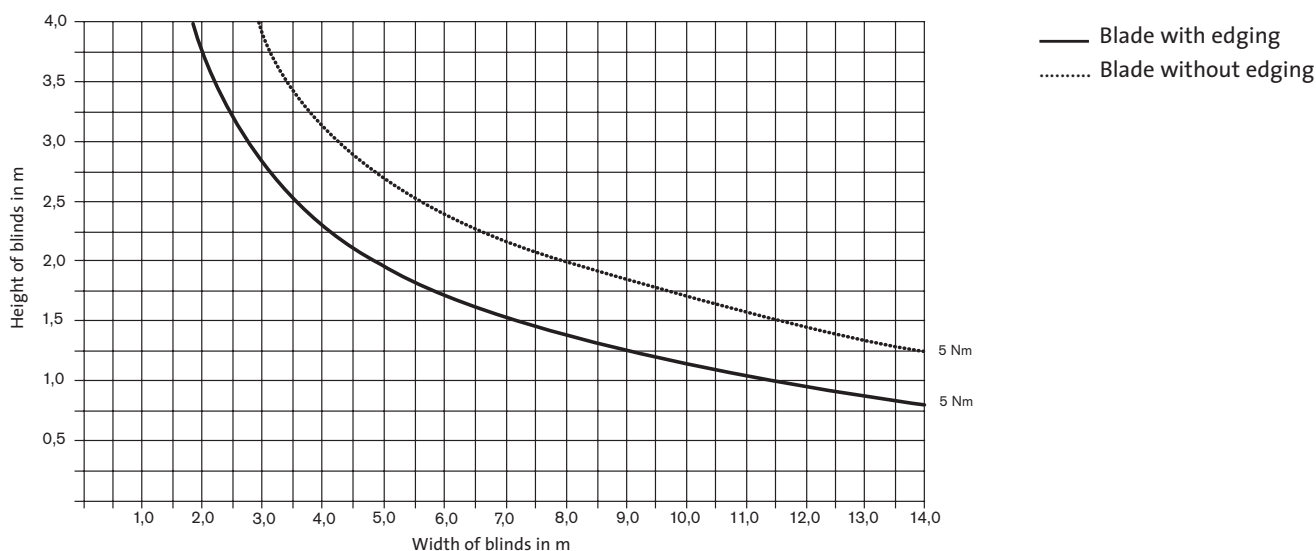


elero blind actuators

Technical data

Pulling force diagram



Calculation basis

	— Blade with edging Blade without edging
Width per blade:	60–90 mm	50 mm
Tape spool diameter:	22 mm	22 mm
Lifting tape thickness:	0,34 mm	0,34 mm
Weight (incl. lowering rail):	2,0 kg/m ²	1,2 kg/m ²

Type	JA 05 Soft
Torque in Nm	5
Limit switch range in turns	85
Turns per min.	26
Power in W	100
Current consumption in A	0,45
Voltage in V	230
Frequency in Hz	50
Operating mode KB in min.	5
Insulation class	H
Capacitor	internal
Cable length with Stas 3 plug in m	0,8
Cable cross-section in mm ²	4 x 0,75
Max.ambient temperature	-20 °C – +60 °C
Protection class	44
CE mark	CE

110-120 V; 210-240 V 60 Hz; 100 V; 200 V 50 Hz on request.




Selection table (data to determine the actuator):

Blades with edging

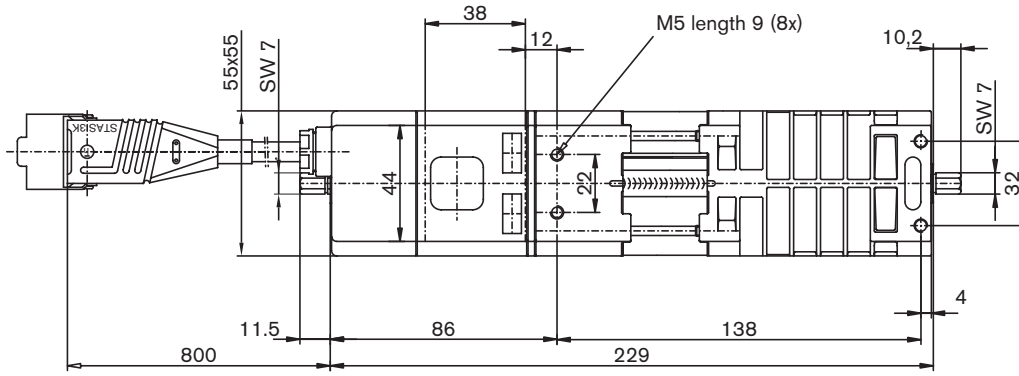
Width per blade:	60 to 90 mm
Take spool diameter:	30 mm
Lifting tape thickness:	0,34 mm
Weight (incl. lowering rail):	3,0 kg/m ²

Torque in Nm	Size of blinds in m ²
3	3
4	4
6	6
10	11
20	21

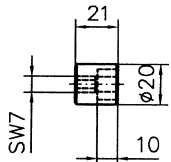
Available couplings

-  Hexagonal: 6, 7, 8, 9, 11 and 13 mm
-  Square: 7, 8, 9, 10 and 12 mm
-  Grooved tube: 12 and 14 mm dia.

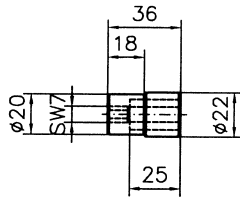
JA 230 V 50 Hz actuator dimension sheet



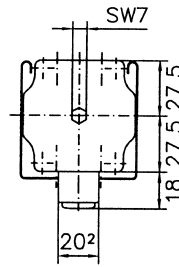
JA 05 Soft



Couplings



Lockable



Soft = noiseless "soft braking"